

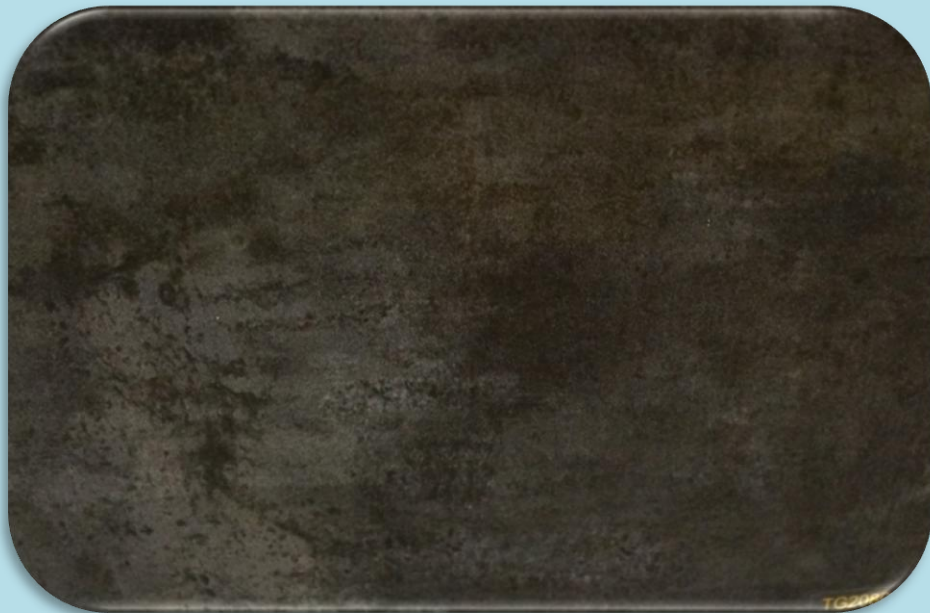


Wooden, Leather & Stone Finishes

2

Wooden, Leather & Stone Finishes

- Various design of Wooden, Leather & Stone finishes are available on GI & All Stainless Steel Sheets Grades.
- Thickness Available from 0.5mm to 2mm



TG2080-09



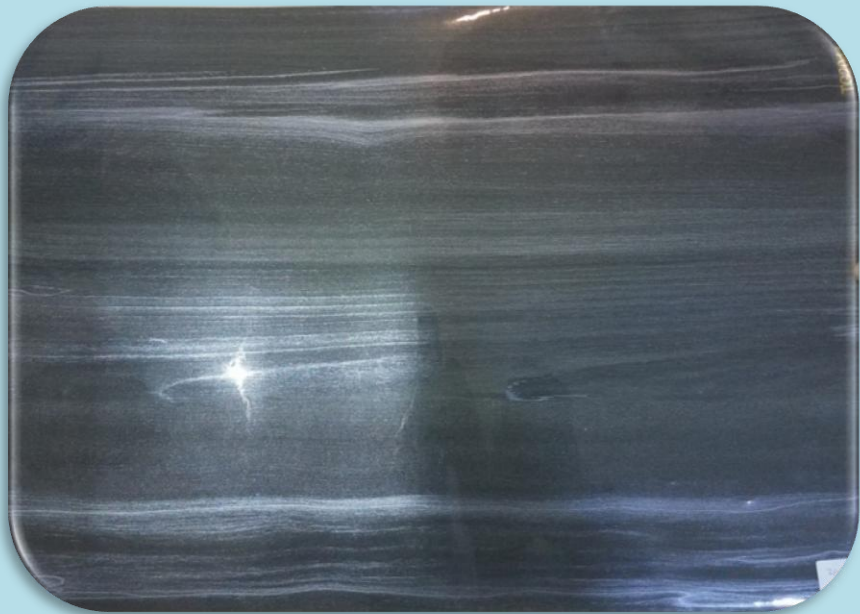
TG2153-02



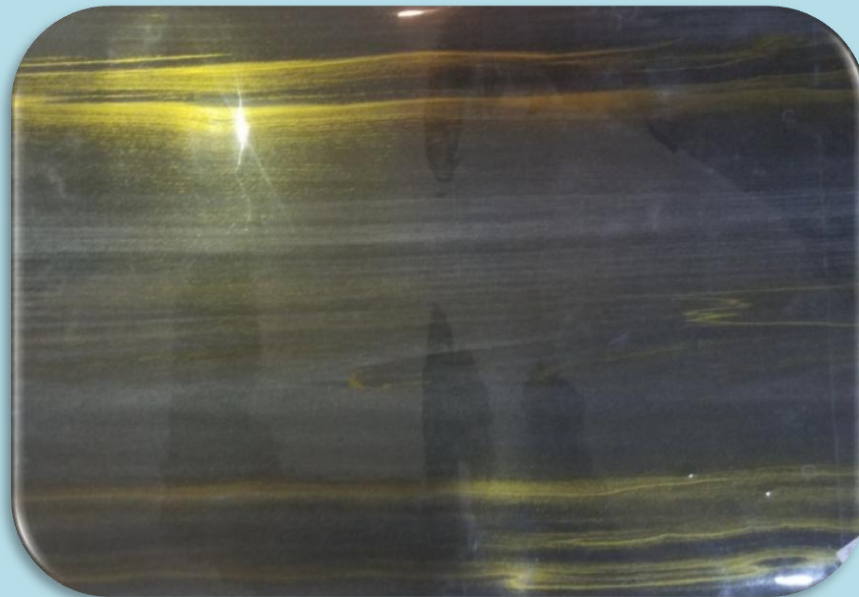
TG2161-04



M-38401-06



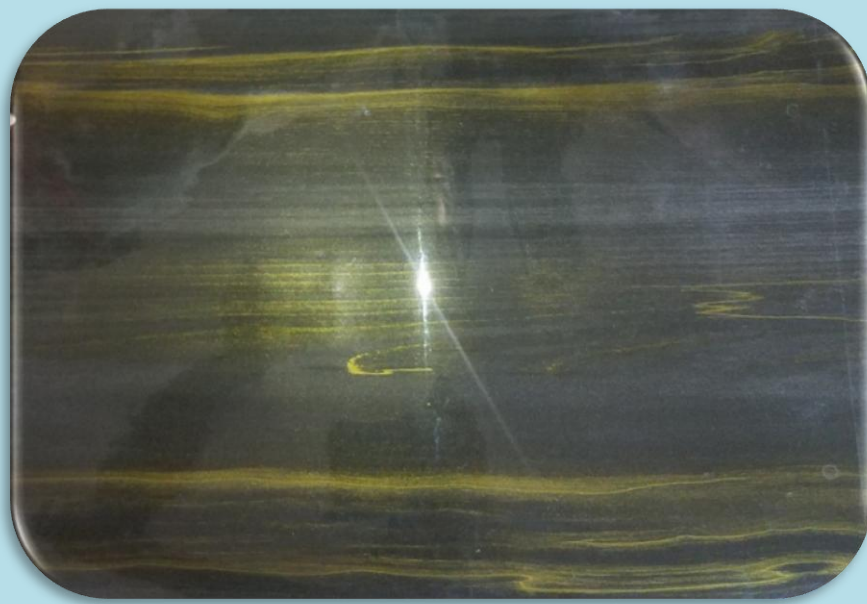
TG2041-12



TG2041-15



TG2131-06



TG2041-14



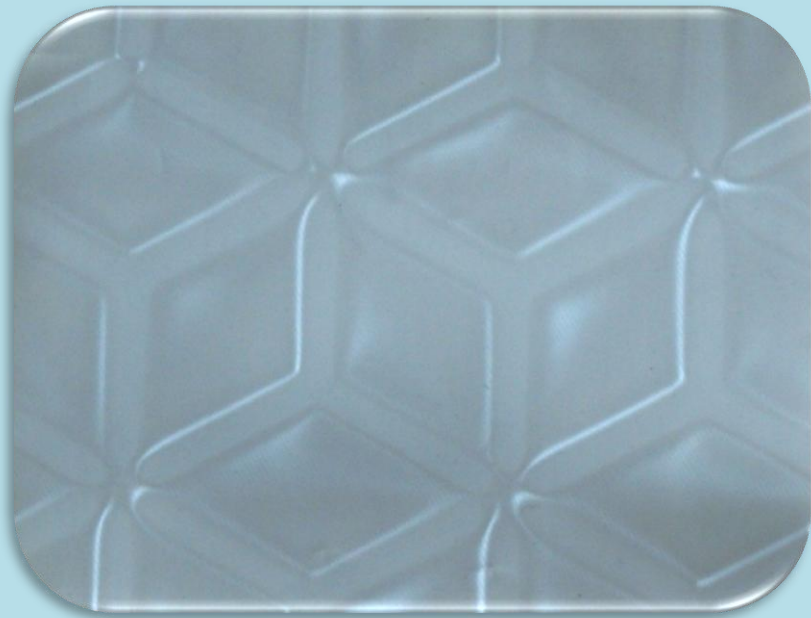
F-5148-09



F-2543-28



F-3412-45



TH016-1



TX2107-3



M-9270-2-35



F-5212-01



TG2148-08



TG2152-02



TG2152-01



TG2151-01

Coming up with more FINISHES

